

# MONTHLY MEMBERSHIP PROGRESS REPORT

District 318 B

Results as of: 5/31/2026

GMT:

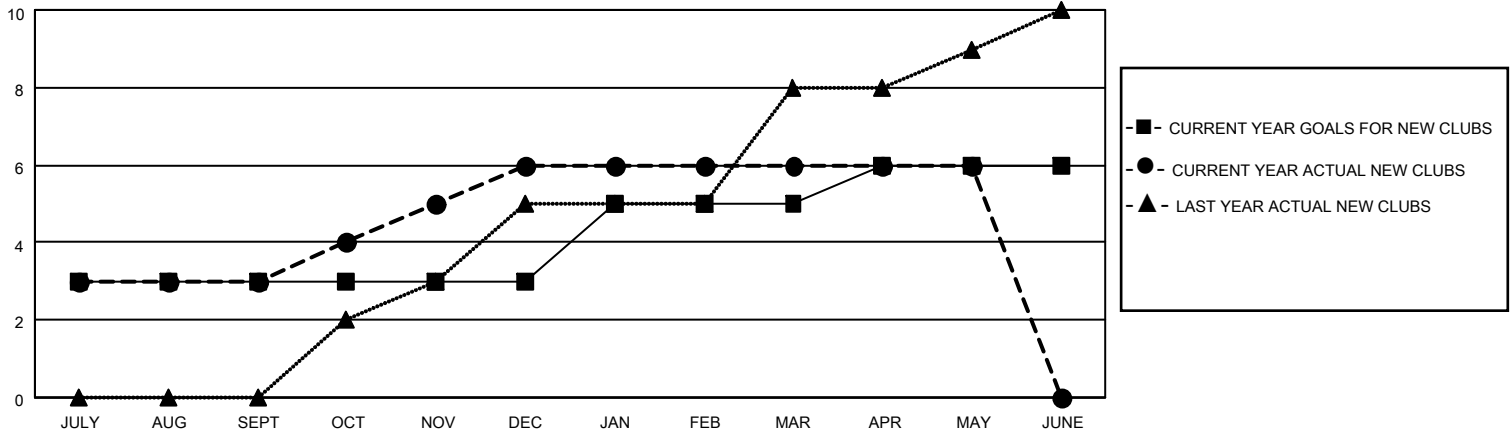
LOCATION INDIA

GMT CA

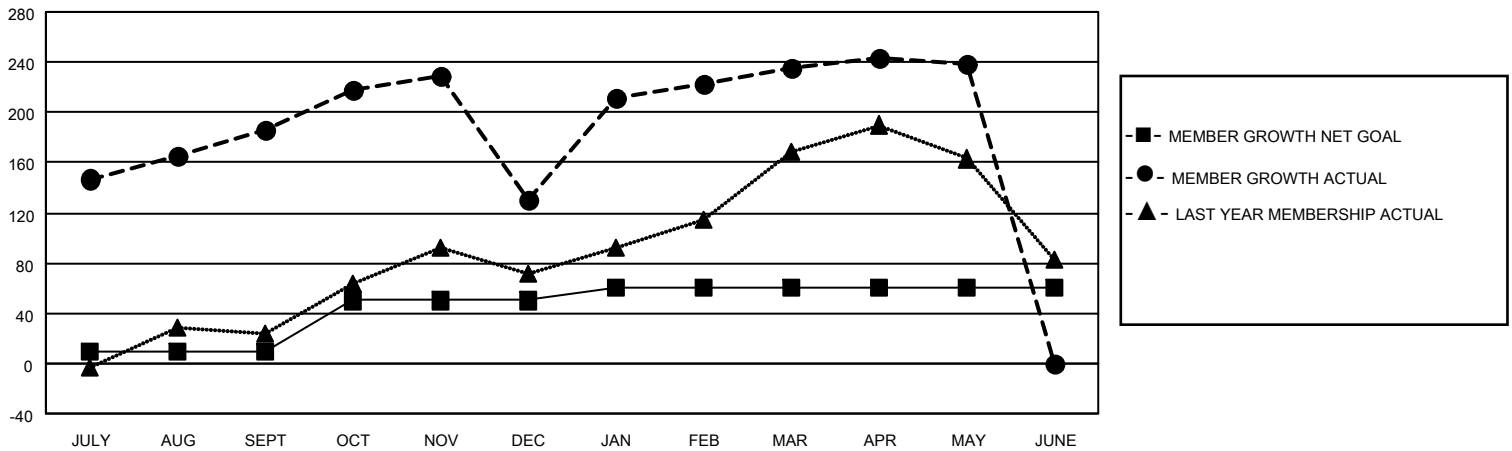
Clubs			
RESULTS FOR 2025-2026			
QUARTER	NEW CLUB GOAL	NEW CLUBS	DROPPED CLUBS
JULY/AUG/SEPT	3	3	1
OCT/NOV/DEC	0	3	4
JAN/FEB/MAR	2	0	0
APR/MAY/JUNE	1	0	0

Members			
RESULTS FOR 2025-2026			
QUARTER	MEMBER GROWTH NET GOAL	MEMBER GROWTH ACTUAL	DROPPED MEMBERS ACTUAL (including transfers)
JULY/AUG/SEPT	10	256	58
OCT/NOV/DEC	40	153	205
JAN/FEB/MAR	10	142	30
APR/MAY/JUNE	0	38	31

GOALS AND ACTUAL NEW CLUBS CUMULATIVE



GOALS AND ACTUAL MEMBERS CUMULATIVE



DROPPED CLUBS: 5

85 CLUBS OF 128 ADDED 1 OR MORE NEW MEMBERS

GENDER DISTRIBUTION

MALE 3,407 (88.56%)  
FEMALE 440 (11.44%)

DROPPED MEMBERS

DECEASED	13
CLUB CANCELLED	82
OTHER	229
<b>TOTAL</b>	<b>324</b>

[CLICK HERE FOR CUMULATIVE MEMBERSHIP DATA](#)

TOTAL FAMILY UNIT MEMBERS	751
FAMILY MEMBERS PAYING HALF DUES	395